

# Autism doesn't have to be puzzling

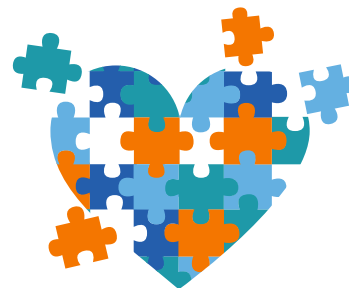
We'll help you figure it out



## The Autism Spectrum Disorders (ASD) program — here for your family

When your child falls somewhere on the Autism Spectrum, you've got a team in your corner, ready to help. Our Autism Spectrum Disorders (ASD) program is here for your whole family, creating a strong care system. We'll help you:

- Strengthen the family unit and make it easier to understand how to use available care.
- Guide your whole family through the health care system.
- Use your benefits effectively to get the best outcomes.



## What the ASD program can do for you

### Community resources and family support

The ASD program team helps:

- Connect you to the resources and knowledge that build a strong foundation of care.
- Tailor referrals and education to meet your family's needs.
- Give you and your family ongoing support so you can overcome obstacles and add new services.
- Make it easier to reach your family's lifestyle and health goals.

### Coordinated care

ASD case managers help you:

- Navigate the complex health care system.
- Address unique challenges of your situation.
- Build a custom care plan for your child.
- Find available services and connect you to any missing care.
- Link your child's treatment providers together for better collaboration.

### Clinical review of Applied Behavior Analysis

We'll help tackle the tough stuff:

- A highly trained team of clinicians, experienced with families touched by ASD, works hard to make sure your child gets the right care from the right provider at the right time.



**We can help**

Call the ASD program team at 1-844-269-0538.